



Project Proposal to the African Elephant Fund (AEF)

COVID 19 related evaluation criteria:

1. The project should address priority objectives 1, 2 or 3 as set out in the African Elephant Action Plan (AEAP);
2. The project should start its activities within 3 months of its approval by the steering committee and completed in no more than 12 months from its inception;
3. The project should be subject to at least one or many of the following criteria:
 - a) Secure small / vulnerable populations that are faced with an immediate threat;
 - b) Address prosecution and criminal investigations;
 - c) Prevent immediate human-elephant conflicts;
 - d) Address a site that is experiencing an escalation in poaching;
 - e) Address a site that is experiencing a decline in law enforcement capacity.
4. Funding request should not exceed 50,000 USD.

1.1: Country: Kenya

1.2: Project title: Management interventions to alleviate human-elephant conflicts around Imenti Forest, Mt. Kenya Forest Reserve, amidst heightened insecurity caused by COVID-19

1.3: Project location: Imenti Forest, dually gazetted as Mt. Kenya National Reserve and Mt. Kenya Forest Reserve (see location map below)

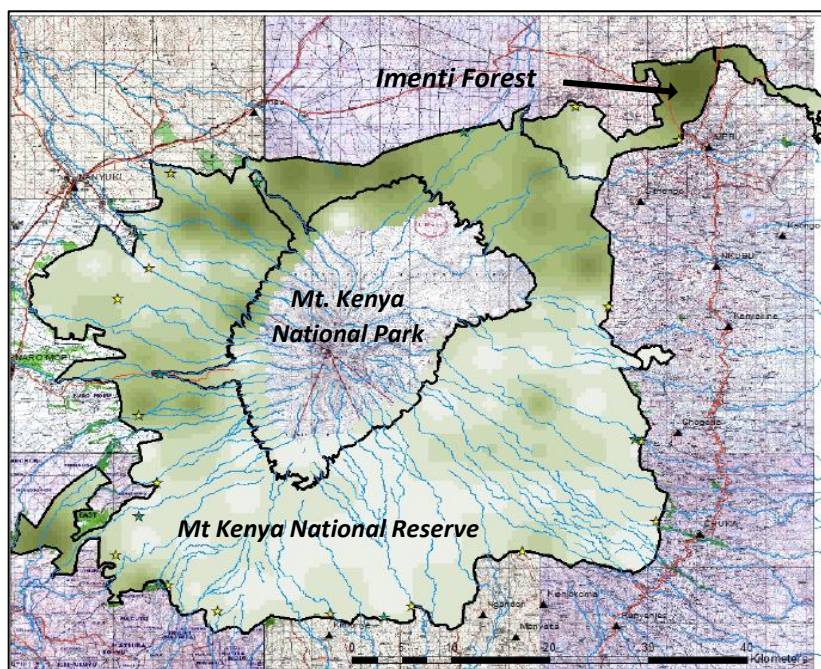


Figure 1: Map of Mt. Kenya ecosystem with Imenti Forest (Vanleeuwe, 2016)

1.4: Overall project cost (USD):



African Elephant Fund

Ensuring a secure future for African Elephants and their habitats



Amount Requested from African Elephant Fund (USD): \$ 49,988

Co-funding source and amount (if applicable) in USD:

World Conservation Society (WCS) – for wildlife grids – USD 70,000;
Elephant Cooperation – for wildlife grids – USD 18,000;
Rhino Ark core funds – for field manager salary & field budget, fence material, fence attendants facilitation – USD 65,000;
Mount Kenya Trust (Kenya partner NGO) – community conservation – *In-kind* support
Kenya Wildlife Service (KWS) – forest security and ecotourism – *In-kind* support

1.5: Project duration: 12 months

1.6: Project proponent: Rhino Ark Kenya Charitable Trust

Other project partners (if any) (*please submit or attach an endorsement letter from national government entity responsible for wildlife*):

Kenya Wildlife Service- **Endorsement Letter to follow**

1.7: Name and institution of project supervisor: Mr. Christian Lambrechts, Executive Director, Rhino Ark Kenya Charitable Trust

1.8: Address of project supervisor: Rhino Ark located at KWS HQs Complex, P.O. Box 181-00517, Uhuru Gardens, Nairobi

1.9: Telephone number: +254714632546

1.10: Email: christian@rhinoark.or.ke

1.11: Date of submission: 6th July 2020

2.0: Project summary (*overall rationale, objectives of the project, expected outputs and expected results maximum 1 page*) (*How is this project addressing COVID 19 related challenges that are hampering elephant conservation?*)

Background

Rhino Ark's approach to forest protection at Imenti Forest is a pragmatic model which has, within 4 years, delivered very positive results for wildlife conservation, and economic development linked to conservation through forest-based employment. This project is important because **the highest concentration of the Mt. Kenya elephant population**, totalling an estimated 2,600 individuals (Vanleeuwe, 2016), is found in the Imenti Forest. Historically, these elephants have been in conflict with local farmers when they wander out of the forest and onto forest-adjacent farms to crop-raid. Between March 2014 and March 2016, 11 community members died due to human-elephant conflicts. In the same period, 11 elephants were killed in retaliation. The project area is **the main human-wildlife conflict hotspot in the forests of Kenya**.

Problem Statement / Rationale

To mitigate these conflicts, Rhino Ark and partners built a 53 km long 10-strand electric fence around the Imenti Forest. Initially the fence proved to be very effective in reducing human wildlife conflicts. However, Covid-19 has impacted tremendously on the financial situation of the partners involved in the fence, fence maintenance, community



African Elephant Fund

Ensuring a secure future for African Elephants and their habitats



engagement and law enforcement budgets have been cut down. For example, tourist revenue for the Kenya Wildlife Service (KWS) has dropped by 96%, triggering budget cuts to government forest security programmes. The Rhino Charge, the main source of funding for Rhino Ark, has been postponed forcing the charity to reduce its fence maintenance and community engagement budgets.

As a consequence, there is an emerging increase in elephant fence breakages leading to crop raiding on neighbouring farmlands and in community retaliation against the elephants.

At the same time, rural people have experienced a COVID-related economic collapse, leading to reduced livelihoods. To compensate for these losses in incomes, there has been an increased number of individuals entering the forest to engage in illegal activities.

Objectives

- Reduce illegal killing of elephants by retaliating farmers from forest-adjacent communities around Imenti Forest.
- Reduce human-elephant conflicts between forest-adjacent farmers and crop-raiding elephants around Imenti Forest.
- Secure elephant population and maintain elephant habitats through community-based forest patrols and a network of locally-based informants.
- Establish community livelihood improvement scheme and elephant education programmes to improve cooperation and collaboration with forest-adjacent communities.

Methods and Activities

Under this project, a two-pronged approach will be followed:

a) ***Eliminate human-elephant conflict, elephant fence damage, and elephant killings:***

- Take the required steps to tackle fence breakage hotspots including: deployment of camera traps at GPS-mapped locations to monitor fence breakage behaviour, identify culprits involved, and review fence design to install alternate fence solutions.
- Support improved forest security by: acting as a liaison to bring about improved trust and confidence between government, community and NGO stakeholders, outfit fence maintenance teams appropriately for their field duties, and offer programming support to the Kenya Wildlife Service.

b) ***Improve community cooperation, collaboration and ownership of elephant conservation:***

Utilize the value of a social fence, by securing a win-win scenario by facilitating community meetings on elephant issues, creating joint security foot patrols, establishing a local intelligence unit, re-vitalizing the community forest association, and expanding elephant knowledge and appreciation through an essay-writing talent competition within area schools.

Results and Outputs

- COVID-related poverty will be alleviated in forest-adjacent communities through pro-conservation, economic engagement.
- The Imenti Community Forest Association will be strengthened.
- Critical human-elephant conflict issues and forest insecurity issues will be drastically reduced or even eliminated.
- Fence-break elephant hotspots will be dealt with and extinguished.

3.0: Which **priority objectives, strategies and activities of the project** (there may be more than one) are related to the African Elephant Action Plan (AEAP)?



African Elephant Fund

Ensuring a secure future for African Elephants and their habitats



The Imenti project will have the following objectives ranked in order of priority:

- O.1.** Reduce illegal killing of elephants by retaliating farmers from forest-adjacent communities around Imenti Forest (this is related to **Objective 1 of AEAP**);
- O.2.** Reduce human-elephant conflicts between forest-adjacent farmers and crop-raiding elephants around Imenti Forest (this is related to **Objective 3 of AEAP**);
- O.3.** Secure elephant population and maintain elephant habitats through the establishment of community-based forest patrols and network of locally-based informants (this is related to **Objective 2 of AEAP**);
- O.4.** Establish community livelihood improvement scheme and elephant education programmes to improve cooperation and collaboration with forest-adjacent communities (this is related to **Objective 7 of AEAP**);

The logical framework below describes how the priority objectives, strategies and activities will be implemented:

Priority Objective	Strategies	Activities
O.1 Reduce illegal killing of elephants due to retaliating farmers from forest-adjacent communities	<p>S.1.1 Multi-sectoral and multidisciplinary approach in law enforcement created through improved coordination</p> <p>S.1.2 Build capacity of forest-adjacent communities on value of elephant conservation</p>	<p>A.1.1.1 Communication plan developed with law enforcement agencies such as Kenya Police, Kenya Wildlife Service (KWS), Kenya Forest Service (KFS);</p> <p>A.1.1.2 Communication plan developed with local private and public stakeholders such as Kenya Power, local learning institutions and local leaders;</p> <p>A.1.2.1 Hold <i>Barazas</i> (i.e. name of community gatherings in Kenya) to sensitize the community of plight of elephant and its habitat;</p> <p>A.1.2.2 Establish and build capacity of <i>Community Conservation champions</i> (i.e. a network of community volunteers to educate fellow community members and school going children);</p>
O.2: Reduce human-elephant conflicts between forest-adjacent farmers and crop-raiding elephants around Imenti Forest	<p>S.2.1 Improve the effectiveness of the 53km long Imenti Electric Fence through a continuous fence maintenance programme</p> <p>S.2.2 Strategic support to government partners in charge of Imenti Forest</p> <p>S.2.3 Establish elephant fence breakage hotspots and provide interventions</p>	<p>A.2.1.1 Select and vet members of the fence-line community to participate in fence maintenance;</p> <p>A.2.1.2 Facilitate community-led fence maintenance;</p> <p>A.2.1.3 Establish fence supervision using a field motorcycle;</p> <p>A.2.1.4 Equip the fence maintenance team with requisite working gear, fencing materials, tools and equipment;</p> <p>A.2.2.1 Support KWS vehicle operation with fuel and communication facilitation for the teams;</p> <p>A.2.2.2 Monthly fence meetings with key stakeholders and partners - KWS, KFS, National Government, Mount Kenya Trust and Community Forest Association (CFA) to physically inspect the fence and address emerging issues compromising on the efficacy of the fence;</p> <p>A.2.3.1 Map out fence breakage hotspots;</p> <p>A.2.3.2 Deploy camera traps at fence breakage hotspot to monitor fence breakage behaviour by elephant and the culprits involved;</p>



African Elephant Fund

Ensuring a secure future for African Elephants and their habitats



		A.2.3.3 Review the fence design at the problematic sections and implement appropriate fence upgrades;
O.3: Secure elephant population and maintain elephant habitats through the establishment of community-based forest patrols and network of locally-based informants	<p>S.3.1 Strengthen community benefit from secure elephant habitats through local de-snaring patrols and anti-poaching programmes</p> <p>S.3.2 Ensure sustainable utilization of forest products</p> <p>S.3.3 Gather local knowledge about illegal forest activities and community actions targeting elephants</p>	<p>A.3.1.1 With leadership from Mt. Kenya Trust, establish and facilitate community forest patrol teams;</p> <p>A.3.1.2: Build the capacity of patrol teams to develop work plan with clear outputs in terms of patrol efforts and spatial coverage;</p> <p>A.3.1.3 Undertake joint security patrols with our partners KWS, KFS and Mount Kenya Trust;</p> <p>A.3.1.4 Facilitate monthly meetings to discuss field patrol reports with our partners KWS, KFS, Mount Kenya Trust and CFA;</p> <p>A.3.2.1 Working with KFS and CFA, develop a comprehensive action plan for forest usage including user rights and sustainable offtakes;</p> <p>A.3.2.2 Provide leadership in support of a CFA membership registration process and provision of membership cards to all members;</p> <p>A.3.2.3 Regulate use of forest access gates and maintain a gate register at each gate;</p> <p>A.3.3.1 Establish network of informants from the local community;</p>
O.4: Establish community livelihood improvement schemes and elephant education programmes to improve cooperation and collaboration with forest-adjacent communities	<p>S.4.1 Link community livelihood improvements to conservation</p> <p>S.4.2 Engage local schools and communities in elephant education programmes</p>	<p>A.4.1.1 Provide beekeeping training for improved hive establishment and maintenance;</p> <p>A.4.1.2 Facilitate an elephant essay-writing competition among area schools. Judges to be selected from the area committees and prizes given for the 1st, 2nd and 3rd place finishers;</p>

4.0: Project Rationale – why is this project necessary? What threats face this elephant population (for example, what information you have regarding population details, trends in population (downward or upward), ivory seizure information, details about levels of poaching, human/elephant conflict, habitat loss etc.) (2 pages maximum)

Mt. Kenya has a population of over 2600 elephants (Vanleeuwe, 2016) with the highest concentration found in Imenti Forest. The forest is surrounded by densely populated settled areas. As a result, human-elephant conflict has become a major challenge here.

Between March 2014 and March 2016, 11 community members died due to human-elephant conflicts. In the same period, 11 elephants were killed in retaliation. To mitigate these conflicts, Rhino Ark and partners built a 53 km, 10-strand electric fence around the Imenti Forest.

Fence maintenance is critical to ensure that the fence remains effective in keeping elephants inside the protected areas. Therefore, for each 4km fence section completed,



African Elephant Fund

Ensuring a secure future for African Elephants and their habitats



one person from the local community is engaged and trained by Rhino Ark as a fence attendant to secure and maintain the fence. Using this strategy, the fence maintenance programme has been running smoothly from March 2016 to May 2020.

Unfortunately, progress in reducing human-elephant conflicts over the last four years are now in jeopardy due to COVID-19. The *Rhino Charge*, Rhino Ark's penultimate annual conservation fund raising event, was postponed to October, and remains uncertain to go ahead at all. Furthermore, the core donors and sponsors of the event are equally impeded financially, foreshadowing dropped support for critically important conservation work in 2020 and beyond. This has adversely constricted funds to continue supporting maintenance of Imenti game-proof fence.

As a consequence, whilst the fence has proven effective in reducing human-wildlife conflicts, there is an emerging increase in elephant fence breakages leading to crop raiding on neighbouring farmlands and in community retaliation against the elephants.

Furthermore, COVID-19 equally has not spared our conservation partners. Tourist revenue for Kenya Wildlife Service (KWS) on Mt. Kenya has declined by 96%, triggering budget cuts to forest security programmes. In such context, community-based forest security patrols are even more critical. Rhino Ark and partners, such as the Mount Kenya Trust, are experienced in establishing joint security foot patrols and in the development of network of informants. We also have extensive experience in camera trapping and in establishing platforms to enhance collaboration among public and private partners involved in conservation.

To address the decline in law enforcement capability and the increase in human/elephant conflict, Rhino Ark is seeking support from the African Elephant Fund to secure the conservation gains made over the past four years in the Imenti Forest.

5.0: Detailed Proposal – including activities to be carried out, anticipated milestones), timelines, reporting channels and procedures, etc. (3 pages maximum).
In responding to this section, it would be helpful if you could divide it into five phases (see below tables):

5.1.1: Planning

Statement of the objectives	Activities	Timeframe	Anticipated milestones	Indicators	Channels or process; Consultation with stakeholders /partners
O.1 Reduce illegal killing of elephants due to retaliating farmers from forest-adjacent communities	A.1.1.1 Communication plan developed with law enforcement agencies	3 months / 1 Quarter	Trust and improved communications built through multi-stakeholder approach in addressing wildlife crime	KWS Problem Animal Control (PAC) reports	Workshop proceedings



African Elephant Fund

Ensuring a secure future for African Elephants and their habitats



	A.1.1.2 Communication plan developed with area private and public stakeholders	3 months / 1 quarter	Trust and improved communications built through multi-stakeholder approach in addressing wildlife crime	Reduced conflict reports received by KWS	Community stakeholder meetings
	A.1.2.1 Hold Community <i>Barazas</i>	quarterly	Behaviour change detected with a shift towards pro-conservation actions	Number of barazas held and attendance lists	Community <i>baraza</i>
	A.1.2.2 Establish and build capacity of <i>Community Conservation Champions</i>	Ongoing	Well-equipped and well trained members of Conservation Champions programme	Monthly written and photographic programme reports	Annual conservation champions meetings and award ceremonies
O.2: Reduce human-elephant conflicts between forest-adjacent farmers and crop-raiding elephants around Imenti Forest	A.2.1.1 Select and vet members of the fence-line community to participate in fence maintenance	2 weeks	Team of community-led fence maintenance members established and conversant with TORS	No elephant exiting the forest through the fence- verified by camera trap images	Minutes of monthly Fence Technical Committee (FTC) meeting Minutes of weekly Fence Implementation Committee (FIC) Meeting
	A.2.1.2 Facilitate community-led fence maintenance	Ongoing	As above	As above	As above
	A.2.1.3 Establish fence supervision using a field motorcycle	3 months	Enhanced mobility and access to areas of responsibility	Motorcycle mileage trip logbook	FTC & FIC Meetings
	A.2.1.4 Equip the fence maintenance team with requisite working gear, fencing materials, tools and equipment	Ongoing	Fence maintenance team active and mobile; fully engaged with duties	Invoices & purchase receipts; team quarterly inventory	Minutes of FIC; Minutes of Inspection and Acceptance committee
	A.2.2.1 Support KWS vehicle operation & team communications	Ongoing	Consistent work effort and reporting; best practice in communications achieved	Vehicle trip log and airtime voucher receipts	FTC & FIC Meetings
	A.2.2.2 Monthly fence meetings with key stakeholders	Ongoing	Productive meetings with high attendance levels and effective interventions	Meeting minutes	Meeting minutes
	A.2.3.1 Map out fence breakage hotspots	Ongoing	Hotspots GPS mapped	Field written & photo reports; and camera trap images	Minutes of FTC; maps and photos shared with stakeholders
	A.2.3.2 Deploy camera traps at fence breakage hotspots	Ongoing	Fleet of cameras installed and recording at each identified hotspot	As above	As above
	A.2.3.3 Review the fence design at the problematic sections and implement appropriate fence upgrades	Ongoing	Effective anti-breakage strategy implemented	Elephant fence breakage eliminated	FTC & FIC Meetings
O.3: Secure elephant population and maintain elephant habitats through the establishment of community-based forest patrols and network of locally-based informants	A.3.1.1 Establish and facilitate community forest patrol teams	2 weeks	Community foot patrol members interviewed and selected for duty	Field photo & written reports; patrol registers	Forest Security meetings for KWS, KFS, CFA & other forest security stakeholders
	A.3.1.2: Build the capacity of patrol teams	Ongoing	Community patrol team active and mobile; fully engaged with duties	Certificates of attendance at training workshops	As above
	A.3.1.3 Undertake joint security patrols with our partners	Ongoing	As above	Field photo & written reports; patrol registers	As above
	A.3.1.4 Facilitate monthly meetings to discuss field patrols	Monthly	Productive meetings with high attendance levels and effective interventions	Meeting minutes	Meeting minutes



African Elephant Fund

Ensuring a secure future for African Elephants and their habitats



	A.3.2.1 Working with KFS and CFA to develop forest action plan	6 months	Imenti Forest Management Plan (IMFP) updated and actioned	Meeting minutes and signed deed for the IFMP	Meeting minutes and signed deed for the IFMP
	A.3.2.2 Provide leadership to CFA membership registration process	3 months	1000 card-carrying community members registered under the CFA	Membership records; bank statements for annual fees paid	Forest Security meetings for KWS, KFS, CFA & other forest security stakeholders
	A.3.2.3 Regulate use of forest access gates and maintain a gate register at each gate	Ongoing	All gates manned and accurate records maintained	Gate register record books	FTC & FIC Meetings
	A.3.3.1 Establish network of informants from the local community	Ongoing	System of intelligence reporting and recording established	Confidential reports	Forest Security meetings for KWS, KFS, CFA and other forest security stakeholders
O.4: Establish community livelihood improvement scheme and elephant education programmes to improve cooperation and collaboration with forest-adjacent communities	A.4.1.1 Provide beekeeping training for improved hive establishment and maintenance	1 month – 2 1-week training programmes	Improved hive establishment and maintenance among beekeepers in the area	Honey production increased from previous years	Community barazas
	A.4.1.2 Facilitate an elephant essay-writing competition among area schools. Judges to be selected from the area committees and prizes given for the 1 st , 2 nd and 3 rd place finishers	3 months - 1 school term	Large response from area pupils, students, teachers, and community members to the essay writing challenge. Free and fair elections resulting in the selection of worthy winners	Media publicity of the elephant essay writing event; published winning essay; photo and written reports of completion	Community barazas

5.1.2: Procurement (goods, services, equipment, travel, workshop, accommodation etc) (Please explain what goods and services you will be procuring and for what purpose)

	Goods	Purpose
1	Fence materials, tools and equipment.	Maintenance of game-proof electric fence
2	Procure one motorcycle	Transport for fence supervisor
3	Posters, videos/films, projector, membership cards and office supplies	Materials to use during community sensitization meetings; elephant education programmes and strengthening CFA activities
4	Procure handheld GPS units and camera traps	Tools to collect scientific data by the field patrol teams
5	Office supplies including: gate registers, pens, rulers, ink pads, note books)	Support gate registry system to record entry/exit into or out of the forest
	Services	Purpose
1	Food ration, transport and communication (airtime, fuel and bus ticket)	Facilitation for community Fence attendants, community scouts and community informants
2	Transport cost /fuel and communication expenses	FIC meetings, FTC meetings, community barazas, field manager, community and resource persons facilitating meetings
3	Beekeeping Expert Trainer	Facilitation of beekeeping training courses for local beekeepers
4	Reward to informants	Intelligence information gathering

5.1.3: Implementation: activity plan, timeline

Activities	Outputs	Delivery Date
------------	---------	---------------



African Elephant Fund

Ensuring a secure future for African Elephants and their habitats



A.1.1.1 Communication plan developed with law enforcement agencies	<ul style="list-style-type: none"> Law enforcement agencies engaged and sharing information - Kenya Police, The Judiciary, schools, National Administration, local leaders and community. 	2 months
A.1.1.2 Communication plan developed with local private and public stakeholders	<ul style="list-style-type: none"> Key stakeholders and local leaders engaged and sharing information. 	2 months
A.1.2.1 Hold community <i>Barazas</i>	<ul style="list-style-type: none"> Local community members sensitized on the need and benefits of elephant and forest conservation, as well as on the importance of the fence. 	3 months
A.1.2.2 Establish and build capacity of <i>Community Conservation champions</i>	<ul style="list-style-type: none"> Lethal local fences (connected to the mains) removed; Behaviour change: Positive attitude and perception towards wildlife conservation; Council of elders –<i>Njuri Ncheke</i> - to take a lead in conservation of elephant and habitat; Increase in number of '<i>Conservation Champions</i>'. 	2 months
A.2.1.1 Select and vet members of the fence-line community to participate in fence maintenance	<p>Fully functional electric fence with:</p> <ul style="list-style-type: none"> Minimum voltage at 5kV; Devoid of vegetation overgrowth; No opening on the tight lock mesh wire; Strainer assemblies well maintained; Outriggers well maintained; Insulators properly nailed; Fence posts to be maintained perpendicular to the ground (not leaning or bending). 	2 weeks from inception and sustained all through to Dec. 2021 and beyond
A.2.1.2 Facilitate community-led fence maintenance	<ul style="list-style-type: none"> Fence voltage kept above 5kV to keep effectively the elephants inside the protected areas. 	2 months and then on-going
A.2.1.3 Establish fence supervision using a field motorcycle	<ul style="list-style-type: none"> Fence attendants adequately supervised. 	2 months and then on-going
A.2.1.4 Equip the fence maintenance team with requisite working gear, fencing materials, tools and equipment	<ul style="list-style-type: none"> Fence attendants able to maintain and repair the fence promptly to avoid elephant exits. 	3 months and then on-going
A.2.2.1 Support KWS vehicle operation with fuel and communication facilitation for the teams	<ul style="list-style-type: none"> Prompt KWS responses to reports of elephant breakages 	1 month and then on-going
A.2.2.2 Monthly fence meetings with key stakeholders - KWS, KFS, National Government, Mount Kenya Trust and Community Forest Association (CFA) to physically inspect the fence and address emerging issues compromising on the efficacy of the fence	<ul style="list-style-type: none"> Fence design or maintenance issues properly identified and joint interventions agreed upon by all key stakeholders. 	1 month and then on-going
A.2.3.1 Map out fence breakage hotspots	<ul style="list-style-type: none"> Map of the fence breakage produced and regularly updated. 	2 months
A.2.3.2 Deploy camera traps at fence breakage hotspot to monitor fence breakage behaviour by elephant and the culprits involved	<ul style="list-style-type: none"> Elephants fence breakage behaviour documented to help develop adequate fence design and maintenance responses. 	5 months
A.2.3.3 Review the fence design at the problematic sections and implement appropriate fence upgrades	<ul style="list-style-type: none"> Fence upgrades implemented as required. 	5 months
A.3.1.1 Establish and facilitate community forest patrol teams	<ul style="list-style-type: none"> Secure elephant habitat devoid of snares and traps; Illegal logging and charcoal production brought to a halt. 	2 months and then on-going
A.3.1.2: Build capacity of patrol teams to develop work plan with clear outputs in terms of patrol efforts and spatial coverage	<ul style="list-style-type: none"> Imenti Forest adequately patrolled. 	1 month
A.3.1.3 Undertake joint security patrols with our partners KWS, KFS and Mount Kenya Trust	<ul style="list-style-type: none"> Reduced incidences of illegal activities in the forests. 	1 month and then on-going
A.3.1.4 Facilitate monthly meetings to discuss field patrol reports with our partners KWS, KFS, Mount Kenya Trust and CFA	<ul style="list-style-type: none"> Joint interventions identified to address illegal activities in the forest. 	1 month and then on-going
A.3.2.1 Working with KFS and CFA develop a comprehensive action plan for forest usage including user rights and sustainable offtakes	<ul style="list-style-type: none"> Action plan developed and agreed by KFS and CFA. 	8 months
A.3.2.2 Provide leadership in support of a CFA membership registration process and provision of membership cards to all members	<ul style="list-style-type: none"> Community Forest Association adequately formed with well-accepted governance structure. 	6 months
A.3.2.3 Regulate use of forest access gates and maintain a gate register at each gate	<ul style="list-style-type: none"> Community Forest Association (CFA) regulate user rights through permits; Gradual regeneration of degraded sites; Regulate competition between wildlife and livestock. 	2 months
A.3.3.1 Establish network of informants from the local community	<ul style="list-style-type: none"> Profile of forest/wildlife offenders; Poaching/hunting/logging are stopped before being executed. 	4 months
A.4.1.1 Provide beekeeping training for improved hive establishment and maintenance	<ul style="list-style-type: none"> Adoption of beekeeping as an alternative source of livelihood; Nature-based source of income; 	8-12 th



African Elephant Fund

Ensuring a secure future for African Elephants and their habitats



<p>A.4.1.2 Facilitate an elephant essay-writing competition among area schools. Judges to be selected from the area committees and prizes given for the 1st, 2nd and 3rd place finishers</p>	<ul style="list-style-type: none"> • Building constituents of pro-conservation family. • Community pupils sensitized on the need to conserve the elephant and their habitats and on the importance of the fence. 	<p>6 months</p>
--	--	-----------------

5.1.4: Monitoring and evaluation measures of the project

(Please explain how the monitoring and evaluation of the project will be conducted)

Project monitoring and evaluation is a critical component to overall achievement of the four central objectives of this project.

Project implementation will be monitored to track performance, assess progress, identify problems and constraints, and determine the need for corrective measures. Indicators, central to the accomplishment of the key project objectives, have been established for this purpose (see 'Indicators' in Planning Table 5.1.1). The timely delivery of the monitoring measures (see 'Anticipated Milestones' in Planning Table 5.1.1), as well as feedback from stakeholder consultation and engagement process will be used to evaluate the project.

On-going monitoring will be undertaken during the monthly Fence Technical Committee meetings during which fence, security and community engagement issues will be discussed.

On-going re-assessment of objectives, activities, and anticipated milestones, along with regular stakeholder dialogue, will enable corrections to the project design.

5.1.5: Technical and financial reporting

(You will be expected to submit interim and final reports for this project in the UN standard template: Please provide details of the responsible officer/entity who will be responsible for preparing these reports and please confirm your capacity to comply with these requirements)

Qualifications: Rhino Ark is running yearly programmes supported by grants and contributions amounting to USD 3 million.

Responsible Officers:

- Mr. Christian Lambrechts - Executive Director, Rhino Ark Kenya Charitable Trust. Tel: +254 (0) 714-632-546; christian@rhinoark.or.ke
- Mr. Eric Kihiu – Resource Development Manager, Rhino Ark Kenya Charitable Trust. Tel: +254 (0) 722-526-021; eric@rhinoark.or.ke

6.0: Please explain long term measures to ensure sustainability of the project.

In a response to COVID-19, Rhino Ark is sourcing further support from individuals and organizations to broaden its funding base. For example, Rhino Ark has tendered successful grant proposals to WCS and IFAD to source additional funding to resume construction and maintenance the Mt. Kenya Electric Fence beyond Imenti Forest.

We are optimistic that, before the end of 2021, the impacts of the COVID-19 pandemic will have subsided and the Rhino Ark's penultimate annual fundraising event, The Rhino Charge, will have resumed on an annual basis.



African Elephant Fund

Ensuring a secure future for African Elephants and their habitats



Yet, if the pandemic has taught us anything, it is this: we must continue to diversify sources of financial support going forward, to ensure that we are more resilient to global economic shocks and landscape changes in future.

7.0: Will this project receive any other funding other than AEF? Give all relevant details (for example, amount in USD, source of funds, any restrictions? Please specify.

Source	Amount	Restrictions
World Conservation Society (WCS)	USD 70,000	Funds for elephant grid building only
Elephant Cooperation	USD 18,000	Funds for elephant grid building only
Rhino Ark core funds	USD 65,000	Funds for salaries, fence material, fence attendant's facilitation
Mt. Kenya Trust	In-kind	Funds for community patrol team salaries
Kenya Wildlife Service (KWS)	In-kind	Forest security and ecotourism

7.1: Please provide a detailed proposed activity-based budget for this project (in USD) as per table below:

(N/B: Expenses that fall under incidental procurement which amounts to 20,000\$ or above, or 15% of the total budget (whichever is lower), will require that the implementing partner be subject to the UN procurement assessment.)*

**Incidental procurement: equipment, vehicles, travel, furniture, supplies, commodities and materials.*

Activity	Budget				AEF budget	Co-funding (Non-AEF Budget)
	Quantity	Unit	Unit Cost (USD)	Total Cost (USD)		
Activity 1.1.1: Communication plan developed with law enforcement agencies						
Travel costs, stationery and meals	20	pax	\$ 18	\$ 360	\$ 360	\$ 0
Activity 1.1.2: Communication plan developed with local private and public stakeholders						
Travel costs, stationery and meals	40	pax	\$ 18	\$ 720	\$ 720	\$ 0
Activity 1.1.3: Hold community Barazas						
Travel costs, stationery and meals	6	meeting	\$ 300	\$ 1800	\$ 1800	\$ 0
Sub-total				\$ 2880	\$ 2880	\$ 0
Activity 2.1.1 Select and vet members of the fence-line community to participate in fence maintenance						
Travel costs, stationery and meals	10	pax	\$ 18	\$ 180	\$ 180	0
Activity 2.1.2 Facilitate community-led fence maintenance						



African Elephant Fund

Ensuring a secure future for African Elephants and their habitats



Facilitation for community scouts (Fuel, airtime, food rations)	18	pax	\$ 2946	\$ 35354	\$ 14677	\$ 20677
Activity 2.1.3 Establish fence supervision using a field motorcycle						
Purchase of one motorbike	1	pcs	\$ 2500	\$ 2500	\$ 2500	\$ 0
Activity 2.1.4 Equip the fence maintenance team with requisite working gear, fencing materials, tools and equipment						
Working gear, fencing materials, tools, equipment	53	km	\$ 500	\$ 26500	\$ 0	\$ 26500
Activity 2.2.1 Support KWS vehicle operation with fuel and communication facilitation for the teams						
Fuel and airtime	12	month	\$ 200	\$ 2400	\$ 2400	\$ 0
Activity 2.2.2 Monthly fence meetings with key stakeholders - KWS, KFS, National Government, Mount Kenya Trust and Community Forest Association (CFA) to physically inspect the fence and address emerging issues compromising on the efficacy of the fence						
Travel costs, stationery and meals	12	meetings	\$ 200	\$ 2400	\$ 2400	\$ 0
Activity 2.3.1 Map out fence breakage hotspots						
Purchase of GPS	2	GPS	\$ 350	\$ 700	\$ 700	\$ 0
Activity 2.3.2 Deploy camera traps at fence breakage hotspot to monitor fence breakage behaviour by elephant and the culprits involved						
Purchase of 10 camera traps	10	pcs	\$ 500	\$ 5000	\$ 2500	\$ 2500
Fuel and batteries	6	month	\$ 100	\$ 600	\$ 600	\$ 0
Activity 2.3.3 Review the fence design at the problematic sections and implement appropriate fence upgrades						
Fence material, labour	5	site	\$ 500	\$ 2500	\$ 2500	
Sub-total					\$ 28447	\$ 49677
Activity 3.1.1 Establish and facilitate community forest patrol teams by Mt. Kenya Trust						
Facilitation for community scouts (Fuel, airtime, food rations)	12	month	\$ 500	\$ 6000	\$ 6000	\$ 0
Activity 3.1.2 Build capacity of patrol teams to develop work plan with clear outputs in terms of patrol efforts and spatial coverage						
Travel costs, stationery and meals	15	pax	\$ 18	\$ 270	\$ 270	\$ 0
Activity 3.1.3 Undertake joint security patrols with our partners KWS, KFS						
Fuel, food rations, airtime	12	month	\$ 300	\$ 3600	\$ 3600	\$ 0
Activity 3.1.4 Facilitate monthly meetings to discuss field patrols						
Travel costs, stationery and meals	15	pax	\$ 18	\$ 270	\$ 270	\$ 0
Activity 3.2.1 Working with KFS and CFA develop a comprehensive action plan for forest usage including user rights and sustainable offtakes						
Travel costs, stationery and meals	10	pax	\$ 18	\$ 180	\$ 180	\$ 0
Activity 3.2.2 Provide leadership in support of a CFA membership registration process and provision of membership cards to all members						
Travel costs, stationery and meals	6	meetings	\$ 300	\$ 1800	\$ 1800	\$ 0
Printing of cards and issuance of cards	1000	cards	\$ 1	\$ 1000	\$ 1000	\$ 0
Activity 3.2.3 Regulate use of forest access gates and maintain a gate register at each gate						
Stationeries (Gate registers, pens, rulers, ink pads, note books)	11	gate	\$ 31	\$ 341	\$ 341	\$ 0



African Elephant Fund

Ensuring a secure future for African Elephants and their habitats



Activity 3.3.1 Establish network of informants from the local community						
Airtime and transport	6	pax	\$ 240	\$ 2880	\$ 2880	\$ 0
Sub-total					\$ 16341	\$ 0
Activity 4.1.1 Provide beekeeping training for improved hive establishment and maintenance						
Training workshops	40	pax	\$ 18	\$ 720	\$ 720	\$ 0
Activity 4.1.2 Facilitate an elephant essay-writing competition among area schools. Judges to be selected from the area committees and prizes given for the 1 st , 2 nd and 3 rd place finishers						
Travel costs, stationary, meals	3	meetings	\$ 200	\$ 600	\$ 600	\$ 0
Final meeting for selecting the winners and prize-giving	1	meetings	\$ 1000	\$ 1000	\$ 1000	\$ 0
Sub-total					\$ 2320	\$ 0
Total Cost					\$ 49988	\$ 49677

References used in this project proposal:

Vanleeuwe, H., "Elephant Survey, Mount Kenya", Wildlife Conservation Society, 2016

The following budget items are not funded by the AEF, as agreed by the rules of procedures of the AEF Steering Committee:

1. Salaries, excluding experts/consultants hired for specific activities related to project implementation;
2. Daily subsistence allowances and accommodation, unless it is part of training or activities in remote/rural areas;
3. Flights, purchase of vehicles, excluding bicycles and motorbikes;
4. Educational programmes including bursaries & interns.

Please submit the completed project proposal to: mamadou.kane@un.org and dorris.chepkoech@un.org; with a copy to: unep-africanelephantfund@un.org

You should receive acknowledgement of receipt of your proposal within 14 days. If you do not receive such an acknowledgement, please call: +254 719744186 / +254 710602646.

Additional information on the project proposal may be requested by the Steering Committee of the African Elephant Fund.

N/B: The full project proposal should be translated into a two-page executive summary in the other working languages of the AEFSC (English/French and vice-versa).

For more information, please visit our website: www.africanelephantfund.org